



**Working Together to
Drive our Industry Forward
Cleaning the curbside mix**

The industry is changing





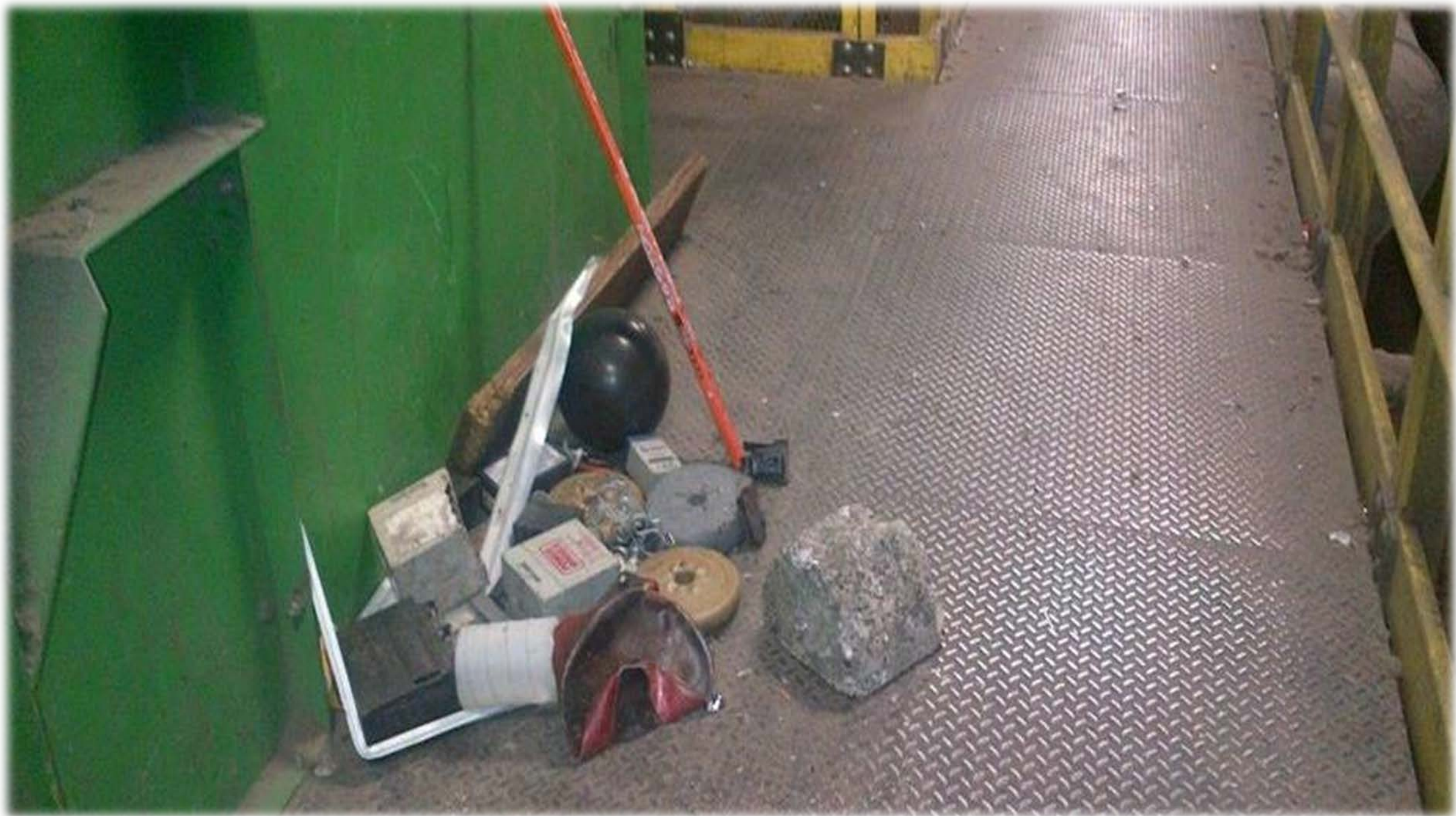


12/15/2012









The Perfect Storm

Challenges

- Stream Composition Changes
 - Rising Labor Costs
- Increasing Maintenance/Processing Costs
 - Depressed Commodity Prices
 - Global Conditions

**We can't control the markets
or the global economy**

But

**We can control what we have control over:
The Curbside Mix**

The Curbside Mix Must be Cleaned Up

Biggest Curbside Recycling Issues

- **Non-Acceptable items**
- **Non-Recyclable Items**
 - **Moisture**

Contamination

WISHFUL RECYCLING

Residents toss items in the recycling bin/cart hoping materials can be recycled, even if not officially acceptable.

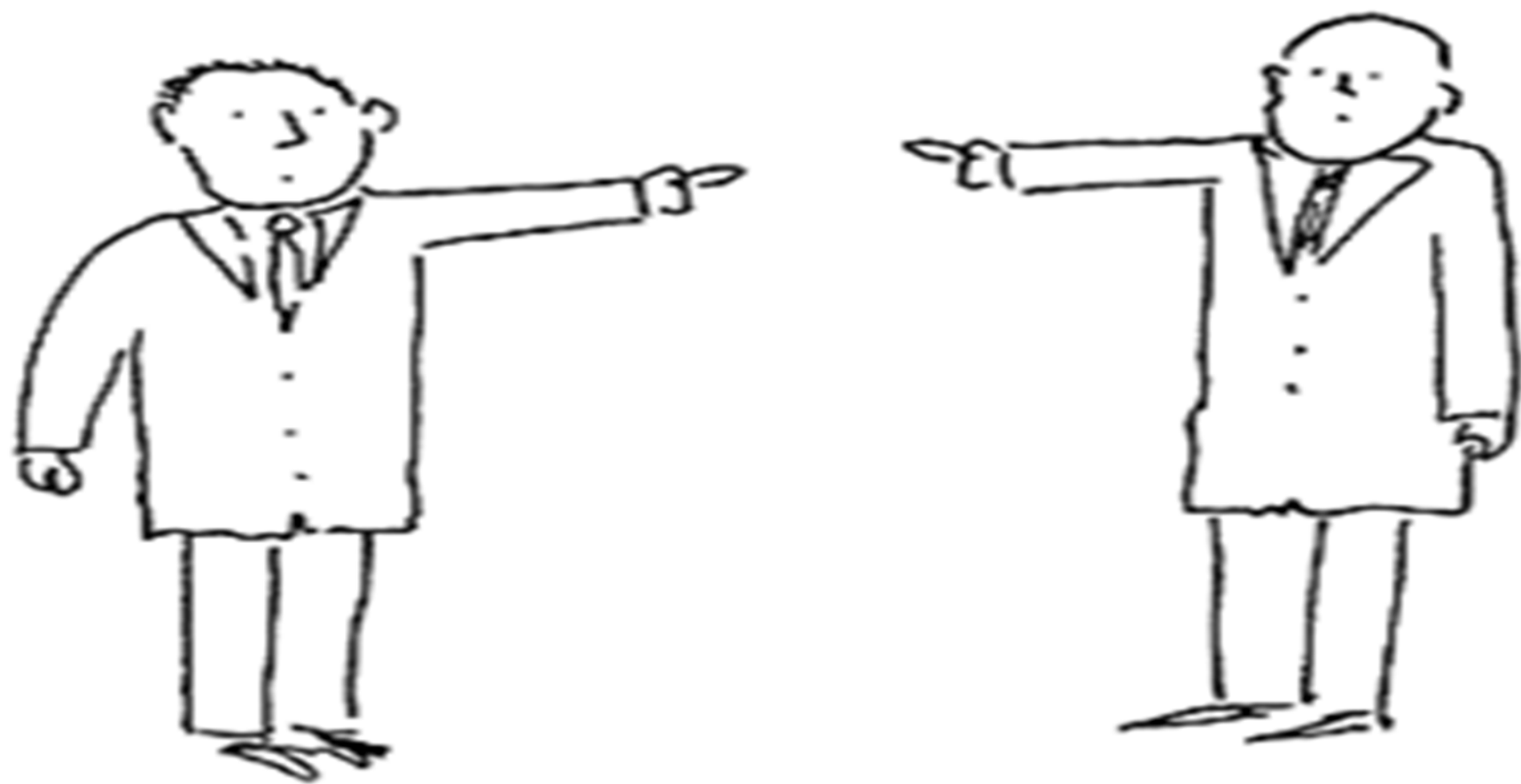
UNSAFE MATERIALS

Yard Waste, wood , hoses, wires, cables, medical items, diapers, and needles create dangerous conditions for employees

HOUSEHOLD WASTE

Residents are simply treating the recycling bin/cart as an extra trash can, contaminating the stream with food waste, dirt, plastic bags, which cause significant downtime at the MRF

WHOSE FAULT ?



**PUBLIC and PRIVATE
PARTNERSHIP**

WE MUST

WORK TOGETHER

**AND ADAPT TO INDUSTRY
CHALLENGES**

Partners

- **Association of New Jersey Recyclers**
 - Counties**
 - Municipalities**
 - Recycling Industry**
- **Rutgers Office of Continuing Professional Education**
- **New Jersey Paper Recycling Association**
 - Processors**
 - Brokers**
 - Mills**

The Curbside Mix Must be Cleaned Up

- **Continuous Education**
- **A System for Enforcement**
- **Flexible and Transparent Partnerships with Sustainable Deal Structures that evolve with the ever changing dynamics and economics of recycling**

Production of High Quality Recycled Material = Max Value

Quality Control Begins at the Curb

- Presentations at Statewide Meeting
- Regional Discussion Groups
- Presentations and Panel at Statewide Meeting
- Regional Workshops
- County Workshops
- Tours
- ?

Working Together

**Without a plan for constant education
and enforcement the curbside stream
will not change.**

**And it must change for recycling to be
sustainable**

**Recycling is an important
component
of the sustainability initiative
of the world.**

**We must invest in it
accordingly.**



Thank you

Marie Kruzan
Executive Director
Association of NJ Recyclers
908-722-7575
anjr@optimum.net