

DEVELOPING & MAINTAINING PARTICIPATION IN ORGANICS PROGRAMS

Athena Lee Bradley

Northeast Recycling Council

www.NERC.org

or•gan•ics

noun

1. Of, relating to, or derived from living organisms: organic matter
2. Yard and landscape trimmings—leaves, grass clippings, & tree & brush trimmings
3. Agricultural and land-clearing/forestry debris
4. Manures and biosolids
5. Food scraps and food processing residues
6. Non-recyclable/soiled paper—napkins, paper towels, pizza boxes & other paper products
7. Items manufactured from organics—compostable bags, utensils, plates, cups and bowls made from corn and potato starch, bagasse, PLA and similar materials

Percentage of Organics in MSW

- Largest component of municipal solid waste
 - 56% of what we send to landfills & incinerators
- Yard trimmings recycling @ 57%
- Food Scraps @ less than 4%
 - *34 million tons* of food waste are tossed away by homes & businesses in the U.S.

Essential Organics Management Tool—

Public Outreach & Education

Goals of Outreach/Education

Ensure participants:

- Learn about the program & participate
- Know what's required
- Ease concerns & answer questions

*General strategies are applicable to
virtually all education campaigns...*

The message will be specific to the program

Getting Started with Public Awareness

- Who are the Stakeholders/Targets?
 - Decisionmakers, residents, businesses, schools
 - *Who do you want participating?*
- Costs/benefits to participants & community
- Outline program specifics & goals

Getting Started, cont.

Explain:

- Requested “behavior changes”
- Program requirements
- Address concerns

What’s in a word?

- Food scraps
- Materials Management



COMPOST



**REDUCTIONS IN
DISPOSAL NEEDS**



**REDUCED GREENHOUSE
GAS EMISSIONS**



**HEALTHIER SOIL &
PLANTS**



BETTER NUTRIENT CYCLING



**STIMULATES THE LOCAL
ECONOMY**



**EROSION CONTROL & STORM
WATER MANAGEMENT**

What's the Program Requirements?



**LANDFILL BOUND
PUT IN THE BROWN BIN**



SOILED PLASTICS



JUICE BOXES & POUCHES



CHIP BAGS



ALL STYROFOAM & STRAWS

20%

LANDFILL

FEED ME THINGS THAT CAN'T BE RECYCLED — LIKE STYROFOAM, CHIP BAGS AND JUICE BOXES.



**FOODSCRAPS & SOILED PAPER
PUT IN THE YELLOW BIN**



PIZZA BOXES



PAPER BAGS



PAPER & TISSUES



CUT FLOWERS



COMPOSTABLE DISHES & SCRAPS



TEA BAGS



ALL FOODSCRAPS INCLUDING BONES AND SHELLFISH



40%

COMPOSTABLES

MY DIET IS STRICTLY FOODSCRAPS AND SOILED PAPER — LIKE NAPKINS AND TISSUES.



**MIXED RECYCLABLES
PUT IN THE BLUE BIN**



EMPTY CANS & GLASS BOTTLES



CLEAN, EMPTY PLASTIC BOTTLES



CLEAN PAPER



PLASTIC BAGS



COFFEE CUPS & LIDS



CLEAN ALUMINUM FOIL



EMPTY PLASTIC CUPS

40%

RECYCLABLES

FEED ME GLASS BOTTLES, CLEAN PLASTIC, ALUMINUM CANS, AND PAPER.



Santa Barbara Recycles
564-5631 | SBrecycles.org



Is this my week?

We go out every week.

www.garbage reminders.com

**EASY REMINDERS
TAKE THE GUESSWORK
OUT OF GARBAGE DAY!**

Materials must be curbside by 7:00 am to ensure collection.



Organics Green Cart

Collected every 2 weeks (even if not full)

Place the following items in your organics green cart:

All Food Waste: Fruit and vegetable peelings, table scraps, meat, fish, dairy products, cooking oil and fat (cool, wipe with paper towel, place in green cart), bread, rice, pasta, bones, coffee grounds, filters, tea bags, eggshells.

Use boxboard or one sheet of paper to wrap wet food waste.

Yard Waste: Excess leaves, brush and plants.

Boxboard and Soiled Paper: Cereal boxes (remove liner), shoe, cracker and cookie boxes, paper towel rolls, soiled paper, food napkins, kitchen paper towels and tissue boxes (remove plastic).

Other: Sawdust and wood shavings.

Not for the Green Cart:

- No ashes
- No waxed/film packaging (e.g. microwave dinner)
- No corrugated cardboard (e.g. pizza boxes)
- No plastic bags (including 'biodegradable')
- No cans, bottles or glass
- No decorations or wire wreaths
- No newspapers, magazines or shredded paper
- No paper, coffee or Styrofoam cups
- No milk containers
- No rocks, logs or tree trunks
- No soil/sods
- No pet or animal waste

Blue Bag Recycling Paper Recycling

Urban/Suburban:

Collected every week

Rural: Collected every 2 weeks



Blue Bag Recyclables:

Put in clear or see-through blue bag:

- All deposit bearing containers*
- All plastic containers - No styrofoam
- Glass bottles and jars*
- Steel and aluminum cans
- Clean aluminum foil and plates
- All milk containers*
- Mini Sips and Tetra Juice Paks
- Plastic bags including: grocery, retail, bread, dry cleaning and frozen food bags, bubble wrap. Remember to empty and remove all receipts. Please stuff all bags inside a grocery bag, tie and place in blue bag.

*Place all caps in garbage

Paper Recyclables:

Place in a grocery bag, retail or clear bag:

Dry and clean paper, newspapers, flyers, glossy magazines, catalogues, envelopes, paper egg cartons, paperbacks, phonebooks and shredded paper.

Corrugated Cardboard:

(e.g. appliance boxes, pizza boxes)

Fold boxes flat. Tie in bundles approximately 0.6 m x 0.9 m x 0.2 m (2 ft x 3 ft x 8 inches).

Paper and Corrugated Cardboard is placed next to blue bag recycling.

Garbage

Collected every 2 weeks

Place for collection in a secured garbage bag or container



- Aerosol cans, empty
- Aluminum foil, soiled
- Ashes (cold)
- Broken glass (wrapped)
- Bulky items: furniture, stoves, etc.
- Carbon paper
- Ceramics
- Cloth items
- Coffee cups, disposable
- Diapers, disposable
- Dishes
- Floor sweepings
- Frozen juice cans
- Latex gloves
- Light bulbs
- Motor oil containers
- Packaging, non-recyclable
- Paint cans, empty or dry
- Pet/animal waste
- Plastic wrap, soiled
- Potato chip bags
- Styrofoam
- Tissue
- Toothpaste tubes
- Toys, broken
- Vacuum cleaner bags
- Wallpaper

Certain electronics are not accepted for curbside collection. TVs, computers, monitors, printers, telephones, fax machines, cell phones and audio/video playback systems must be taken to an ACES drop-off site for recycling. www.ACESewardship.ca or 1-877-774-3260 for more information.

HHW - Household Hazardous Waste

HHW Depot Drop-Off open selected Saturdays, (call 311 for schedule) 20 Horseshoe Lake Drive, Bayer's Lake Business Park.



Take these items to the HHW Depot:

- Batteries of all types
- Leftover corrosive cleaners
- Pesticides/herbicides
- Gasoline
- Fuel oil
- Solvents and thinners
- Pharmaceuticals and drugs
- Aerosol cans containing hazardous substances
- Leftover liquid paint* (see below)
- BBQ propane tanks
- Small propane cylinders (e.g. camp fuel)
- Motor oil (or contact your oil retailer for a used oil drop-off site near you)

Special Notes: HHW materials are not collected at the curbside.

*Left over liquid paint should be returned to the ENVIRO-DEPOT™ in your neighbourhood. Contact ProductCare.org/NS or call 1-888-772-9772.

Householders disposing of needles can pick up a sharps container and return it to their local pharmacy or contact the Canadian Diabetes Association.

YOUR GREEN BIN JUST GOT GREENER.

SU BOTE VERDE ACABA DE ENVERDESER.

Food is now accepted.

Santa Monica takes one giant step toward the goal of a zero waste future by introducing food scraps to yard trimmings collection. These valuable resources will be sent to a composting facility for processing. Below are a few guidelines for you to get started.



Ahora se acepta comida.

Santa Monica a tomado un paso gigante hacia la meta de reducir basura a un porcentaje de zero, con la introduccion de colleccion de comida y recortes de jardin. Estos valiosos recursos seran mandados a un centro donde se convertiran en abono. Abajo encontrara un guia que demuestra como empear a contribuir hacia esta meta.

WHAT GOES IN THE GREEN BIN: QUE VA EN EL BOTE VERDE:

ALL FOOD

TODA LA COMIDA



YARD TRIMMINGS

RECORTED DE JARDIN



PLEASE NO:



Resource Recovery & Recycling Division

www.smgov.net/recycling

310.458.2223

POR FAVOR NO:





Participation Strategies

- How are you going to get your message across?
 - Use different ways to communicate the same information
 - How many information "hits" to motivate action?
- Involve other organizations
 - Master gardeners, citizen groups, environmental groups
- Timing
 - Spring/fall
- Get creative, think outside of the box
- Don't reinvent the wheel



An Effective Way to Begin— “Organics Summit”



Press Conference





Planning and Sustainability

Innovation. Collaboration. Practical Solutions.

PHONE: 503-823-7700
FAX: 503-823-7800

1900 SW 4th Ave., Suite 7100, Portland, OR 97201
[MORE CONTACT INFO](#)

[Find Your Collection Schedule](#)

[Portland Composts!](#)

[Portland Recycles!](#)

[Garbage Collection](#)

[Frequently Asked Questions](#)

[Rental Houses and Smallplexes \(2-4 units\)](#)

[Rates, Service Options and Container Set-out Information](#)

[Extra Capacity Instructions and Form](#)

[Non-curbside Service for Disabled Customers Application](#)

[Residential Garbage, Recycling and Composting Guide](#)

[Ask a Garbage, Recycling or Composting Question](#)

[Subscribe to RSS](#)

MOST POPULAR

[Find Your Collection Schedule](#)

[Portland Composts!](#)

[Garbage Collection](#)

[Portland Recycles!](#)

[Rates, Service Options and Container Set-out Information](#)

[VIEW MORE](#)

MOST RECENT

[Frequently Asked Questions](#)

Portland Composts!



Mix food scraps and yard debris together in your green Portland Composts! roll cart

Be Cart Smart: Mix food scraps and yard debris together in your green Portland Composts! roll cart. Composting yard debris and food scraps reduces waste and creates nutrient-rich fertilizer.

Green compost roll cart information and instructions

- ▶ Yard debris and food scraps are picked up weekly
- ▶ Set out your roll cart for pickup every week – even if it's not full
- ▶ Weight limit is 135 lbs
- ▶ Do not pack tightly – contents must fall freely from the roll cart
- ▶ Remove empty containers from curb within 24 hours

Three simple steps for food scrap collection

1. Place your kitchen compost container in a convenient location in your kitchen. You can line your container with [approved liners](#).
2. Include the food! Collect food scraps while preparing meals, scraping plates and cleaning the fridge of leftovers – every little bit counts.
3. Empty your kitchen container, including the liner, into your green Portland Composts! roll cart as frequently as you like. Place your green roll cart out for weekly pickup.

YES — put these items in your green compost roll cart

Food scraps

- ▶ meat, poultry, fish, shellfish, bones
- ▶ eggs and eggshells, cheese, dairy products
- ▶ bread, baked goods, pasta, rice, beans, nuts, seeds
- ▶ coffee grounds, filters, tea bags
- ▶ vegetables and fruit





- ▶ paper napkins and paper towels
- ▶ pizza delivery boxes
- ▶ table scraps, plate scrapings, leftovers, spoiled food

[Information on Materials](#)

[Portland Recycles!](#)

[Portland Composts!](#)

[Curbside Collection Service Requirements and Rates](#)

[VIEW MORE](#)



Yard debris

- ▶ weeds, leaves, vines, grass
- ▶ small branches (less than 4 in thick and 36 in long)
- ▶ flowers
- ▶ house plants
- ▶ plant clippings
- ▶ pumpkins



What you can put in your Green Bin



Accepted items

- Meat, fish, or bones
- Cooked food and oily food
- Dairy, pasta, noodles, rice, or bread
- Fruit and vegetable scraps
- Coffee grounds and filters
- Teabags
- Eggshells
- Food-soiled paper, including pizza boxes, paper napkins, and paper bags used to collect food scraps
- Leaves and grass clippings
- Weeds, plants and flowers
- Short branches and prunings (less than 10 cm thick, and less than 0.5 m long)

Unaccepted items

- Plastic bags, wrap, or containers
- Compostable or biodegradable plastic bags
- Rocks, soil, or sod
- Animal waste
- Diapers
- Lumber or other wood products
- Branches or prunings bigger than 10 cm (4 in) in diameter and more than 0.5 m (1.6 ft) in length

Cube of Food



The average family throws out 477 pounds of food each year. Don't forget to recycle your food scraps and food soiled paper! Can't quite picture what 477 pounds of food looks like? Check out the 477-pound "cube of food."



Social Marketing Strategies

- Facebook, Twitter, Blogs, YouTube, Pinterest
- Resident Campaigns
 - Neighborhood contests
 - Door-to-door outreach
 - Pledges
- Business Campaigns
 - Focus group meetings
 - Hands-on training efforts
 - Business recognition programs.



Social Marketing

- Effective promotion to targeted audiences
- Consistent messaging
 - Colorful, targeted messages
 - Timely
- Address perceived barriers to participation
- Suggestions & solutions
 - “Yuck” factor
 - Bears, vermin
 - Odors
 - Traffic

Facebook Page

Go on, take a challenge...



Stop Food Waste

1,031 likes · 6 talking about this

Like Follow Message

Non-Profit Organization

By making small changes to how we manage food at home, we can reduce the amount of food we waste and save money at the same time. Visit stopfoodwaste.ie



Photos

1,031

Likes

About - Suggest an Edit

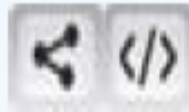
Website & Social Media Videos

You're Watching



Seattle Public Utilities - What goes in the food and yard waste cart? 2/10/2009 03:25

Fruit and vegetables, yard trimmings, and meat and fish are in, but what else goes in your food and yard waste cart?



[Share Link / Embed Code](#)

Universal Signs & Symbols

RECYCLE



© 2010 Recology. All rights reserved.



COMPOST



© 2010 Recology. All rights reserved.



Consistent Images

LANDFILL

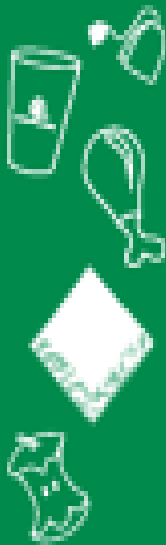


Consistent Colors





COMPOST

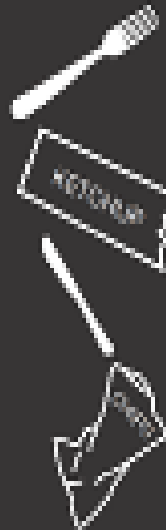


- Food scraps
- Napkins
- Wooden Coffee Stirrer
- Compostable items from Courtyard Café:
- Paper clamshell containers
- Coffee cups (recycle lids)
- Coffee sleeves
- Soup containers (recycle lids)

 Look for the composting symbol!



TRASH

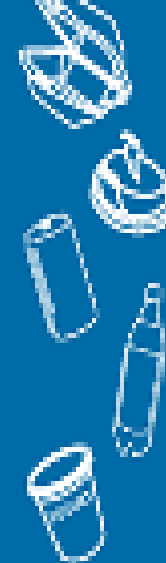


- Plastic silverware
- Condiment packets
- Styrofoam
- Plastic bags
- Candy Wrapper
- Tissues

Confused? Anything that is not recyclable or compostable goes here!



RECYCLE



- Plastic clamshell containers
- Coffee cup lids
- Soup container lids
- Aluminum cans
- Glass bottles
- Plastic bottles & disposable containers (# 1-7)
- Paper & cardboard

Look for the recycling arrow!

Give Back

RECYCLE YOUR FOOD SCRAPS

Ulster County throws
away 40,000,000 lbs
of food scraps each year



Composting is now available at the Ulster County Resource Recovery Agency



Find us on
Facebook

www.ucrra.org

000402



Food+ Compostables [More items at www.seattle.gov/util/foodwaste.](http://www.seattle.gov/util/foodwaste)

Meat, dairy & cheese
 Bones & shells
 Coffee grounds & filters
 Fruits & vegetables
 Pasta, bread, grains & rice
 Tea bags

Approved compostable bags
 Kitchen paper towels & napkins
 Paper bags
 Greasy pizza boxes
 Uncoated paper plates
 Shredded paper (mix with yard waste)

Grass & leaves
 Weeds
 Houseplants
 Branches
(less than 4 ft. long, 4 in. thick)



No Plastic, Glass or Metal



Recycle More.
It's Easy To Do.

Promotion—

Works in concert with PAYT, bans, &
mandatory regulations for
effective compliance & increased
organics diversion



HARNESSING VITALITY

FOOD WASTE

Cedar Grove harnesses the vitality of your organic waste and recycles it into compost

The compost is used to revitalize the soil, coming full circle with your organic waste

GOODNESS FOR THE SOIL

Nearly 30% of what we throw away is organic—ending up in landfills releasing methane and threatening our groundwater

Organics Management Hierarchy

Reduce

- Smart Landscaping
- Grasscycling
- Leaf Mulching
- Food Waste Reduction

Reuse = Recovery

- Food Recovery
- Food to Animals

Recycle = Composting

- Backyard/Home
- Home Digester
- Vermicomposting
- Neighborhood
- School & Special Event
- Centralized
- Anaerobic Digestion

Your Leaves: Love 'Em and Leave 'Em

“It's Green and It Makes Cents”



**LEAVES:
LOVE 'EM
AND LEAVE 'EM**



**LEAVES & GRASS:
WE LOVE 'EM 
AND LEAVE 'EM**

**Watch This Yard - Leaf and
Grass Mulching In Progress**

For More Information: www.LELENY.org

LELE Toolkit

- Sample municipal resolution
- Sample letters
- “Talking points” & a LELE Initiative PowerPoint
- Testimonial ads
- Logo files, Poster & Photos
- Yard signs & bumper stickers
- A "How To" pocket guide (bi-lingual)
- YouTube demonstration & training videos
- Hands-on training

The key:

Let residents & business owners know that organics reduction practices contribute to healthy yard maintenance, are easy to adopt and implement, & generally result in less time & money spent



“I started shredding leaves and leaving them on my clients' properties. The lawns look healthier. The soil is better. I save time and money not having to blow, vacuum, dump leaves.

It's a no-brainer! Even my father (who's had his own landscaping company for a good many years) is convinced. He's adopting the practice, too.”

- Anthony Vulpone, Vulpone Landscape & Lawn Maintenance



Our Leaves: Love 'Em And Leave 'Em

For more information and “how to” -> www.irvingtonny.gov/green

Paid for by the Irvington Green Policy Task Force with a Clean Air, Cool Planet grant.

Providing Clear Options

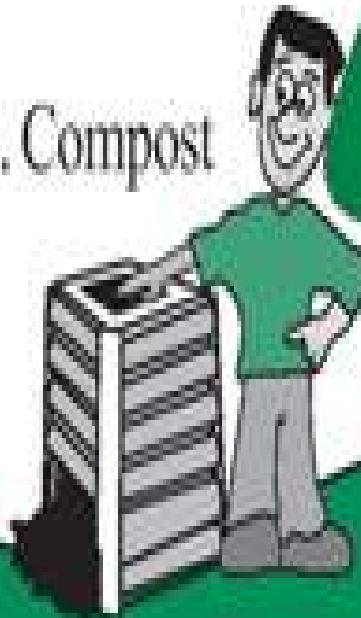
Three ways to handle your yard trimmings (In order of ease)

1. Mulch Mow

(Just mow it and leave it!)



2. Compost



3. Cans, City cart or compostable paper bags



Food Waste Reduction

- 40 percent of edible food is wasted
- Better food management practices are easy to implement

Tips

- Improve food preparation
- Adjust portion sizes
- Monitor food expiration dates



**Toolkit to
Reduce
Household
Food Waste**



Food Recovery

- Reduces food scrap disposal needs
- Helps those in need
- Tax benefits
- Liability exemption (“Good Samaritan Act”)
- Good business...good community relations
- Food to animals – helps farms

Backyard Composting Promotion

- Provide information
 - Benefits of backyard composting
 - How to set it up & make it work
- Different types of information—
brochures, workshops, Facebook
- Composting demonstration sites
- Master Gardener/Composter programs



From Garbage to Garden

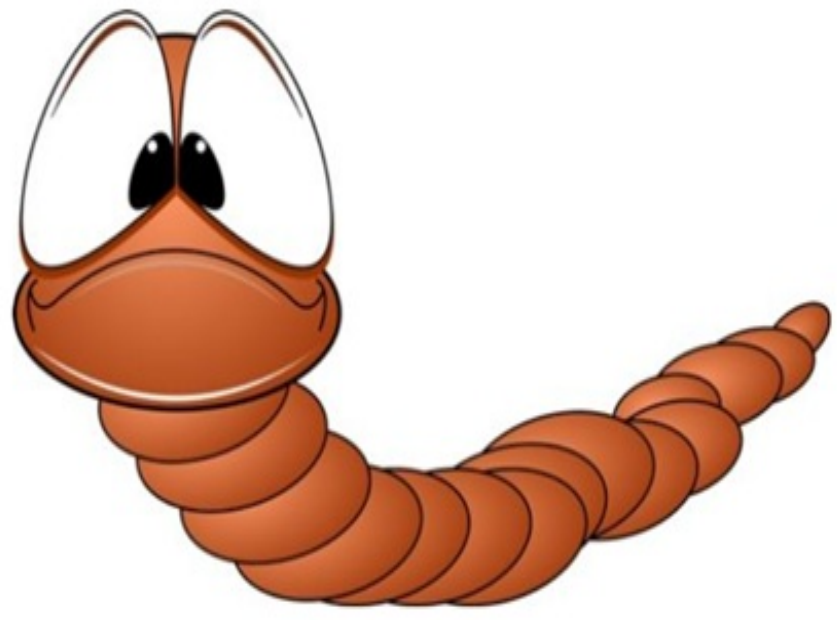


It's Compost Time!

Compost Workshop

**Saturday, April 28th, 10 a.m.-12 noon -
Lafayette**

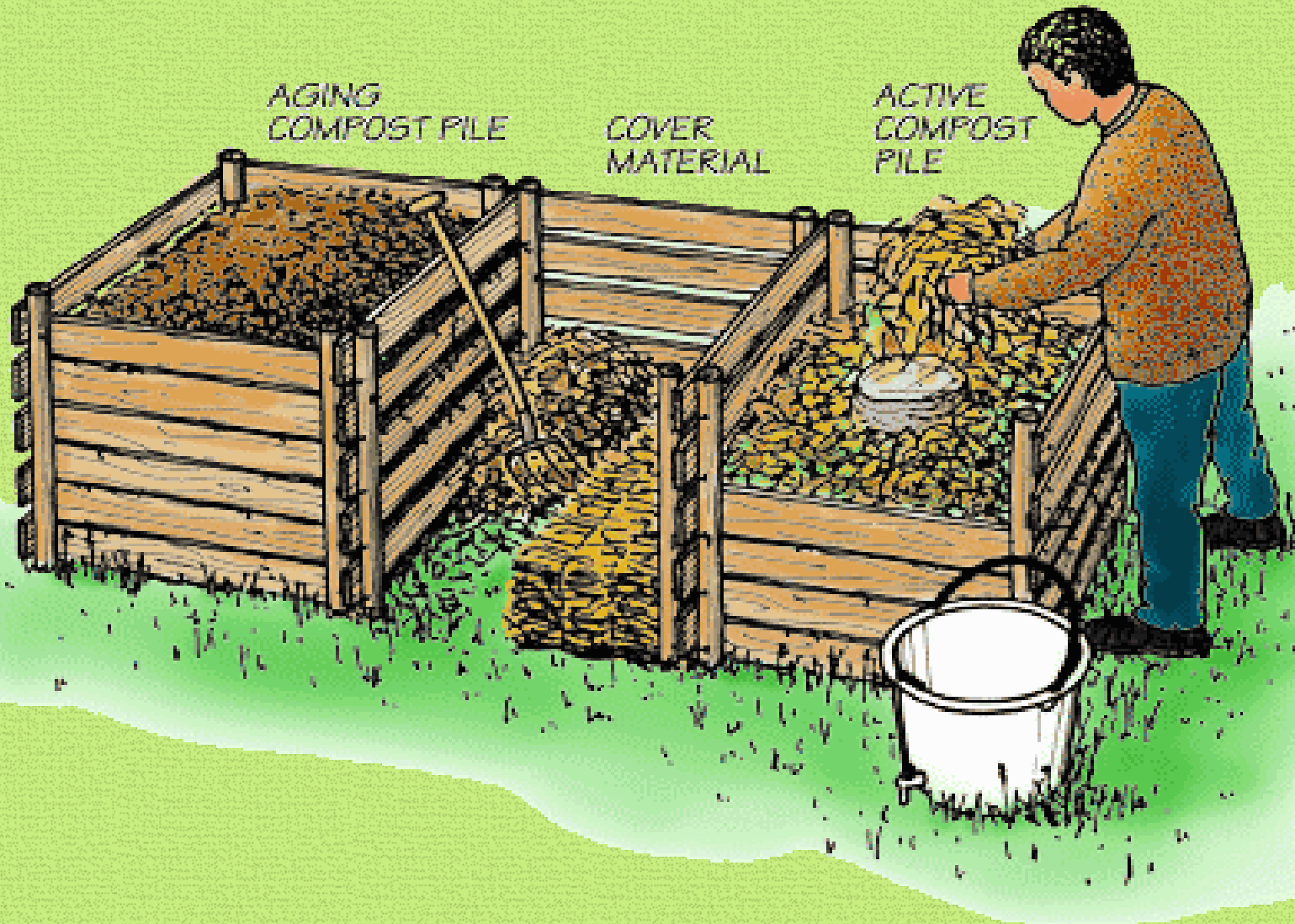
Location: Lafayette Public Library



Revisit Home Composting

- Provide tips on food scrap composting
- Promote & sell compost digesters
- Offer new outreach & training programs
- Sales of compost bins & home digesters
- Reach out to new residents & schools
- Reach a broader audience

Showing the Process through Pictures



Brown



Woody materials:
Dry leaf, twigs,
sticks, etc.
Rich in C

Green



Moist green
materials: Veggie
and fruit peels, etc.
Rich in N

Water



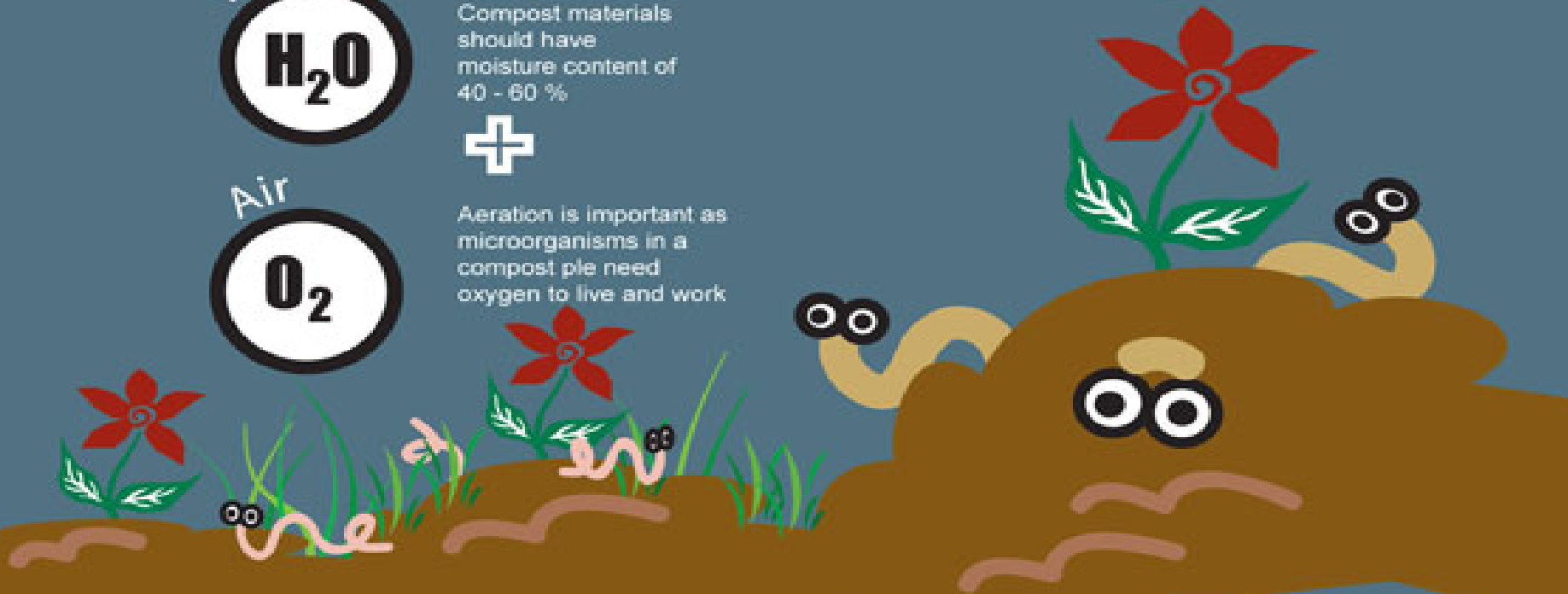
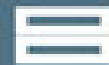
Compost materials
should have
moisture content of
40 - 60 %

Air



Aeration is important as
microorganisms in a
compost pile need
oxygen to live and work

Compost



Special Event & School Composting

- Educational value
- What's Compostable
- Compostable products
- Yuck factor
- Zero Waste



Compost Row

THE

EDIBLE

at

SCHOOLYARD

is a free-standing pile method consisting of layered browns and greens. Students at King Middle School add air to the compost by turning the piles across Compost Row until they have fully decomposed into Living Soil!

Who are the

DECOMPOSERS?

Fungus

Bacteria

Invertebrates



REMEMBER...
the **F.B.I.** need:
→ FOOD!
→ WATER!
→ AIR!

Catchy Phrases

GOIN' COMPOSTAL!

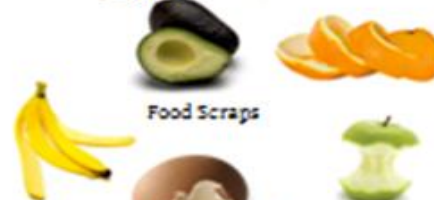
Yes, Compost it!



No, DON'T Compost it!



Tea Leaves and Coffee Grounds



Food Scraps



Leaves, Grass, and Plants



Napkins or Shredded Paper



Used To-Go Containers



Meat and Fish



Dairy



Liquids



Plastic



Colored Paper



Stones and Gravel

Why Compost?

Over **96 billion pounds** of food end up in landfills a year in America.* When we compost our food, it goes back to the earth providing nutrient rich soil that helps grow new food, rather than using space in a landfill.

For more information about Brandeis composting, go to:

<http://www.brandeis.edu/campusustainability/recycling/composting>

Host a Zero Waste party for
up to 200 people with
Eco-Cycle's Zero Waste Event Kit.



© Eco-Cycle 2007

It isn't a great event
unless it's Zero Waste!

Order
yours
today!

Who's Doing It?

Annapolis Royal, Nova Scotia

- Zero waste goal
- Biweekly curbside collection for recyclables & garbage
- Promotes onsite management of household organics

Who's Doing It?

Central Vermont Solid Waste District

- Residential Organics Diversion Program
 - Promotes management of all organics at home
- School Organics Program
 - All schools (25) participate in the School Zero Waste Program
- Business Organics Program
 - Free training & instructional signs for work spaces
 - Free signs to market participation to customers
 - Free hauling of food scraps for the first month
 - Free 48-gallon totes for food scraps
 - Limited free advertising in local media

ZERO WASTE CENTRAL™





Who's Doing It?

Manchester Essex Regional MS

Manchester-by-the-Sea, Massachusetts

- Successful Green Team
- 90% waste stream reduction
- District-wide

Westwood Elementary

Enumclaw, Washington

- King County Green School
- 54% recycling rate



The Compost Club

An inspiring recycling story



[Home](#) [About](#) [Big Picture](#) [Installed systems](#) [Learn](#) [Shop](#)

Learning Library

Welcome to our library. Click on the links to learn more.

The Compost Club promotes and shares information to create compost systems sufficient in size and type to handle food scraps and organic waste for a school, site, or business. Our links to sites below provide educator and learner resources related to composting.

UC Master Gardeners Worm Composting Brochure

[Putting Worms to Work and Keeping them Happy](#)

Newsletters produced in the past by The Compost Club

[January Highlights](#) (2007)

[Spring Highlights](#) (2007)

Government Sponsored websites- Statistics and interesting facts

[Cal Recycle](#)

[US EPA](#)

[City of Santa Rosa Compost and Biosolids Approach](#)

Basic to advanced Worm Bin Construction

Rubbermaid Bin #1 [Whatcom County -Simple Worm Bin Specs](#)

Rubbermaid Bin #2 [Oregon Soil Corporation Junior Reactor](#)



The Compost Club

Like 72

Search

Who's Doing It?

Pleasantville Music Festival

Pleasantville, New York

- Zero waste event
- Volunteers staff zero waste stations
- In 2012, waste reduced from 5.5 tons to 1.85 tons



Garlic and Arts Festival, Orange, Massachusetts

- 10,000 people attend this two-day event
- Composting since 2004 & zero waste 2006
- Vendors must use compostable service ware
- Volunteers staff five zero waste stations
- Two bags of trash from the portable toilet areas

Commercial Composting

Getting Businesses on Board

- Offer to assist with waste audits
- How to “right size” trash collection
- Training & training resources



Signage

- Clear
- Simple
- Pictures



FEED ME!



Pre & Post-Consumer Food Scraps

- Start with pre-consumer food scraps
 - Prep scraps
 - Container in prep area
- Easier to train staff first
- Then tackle post-consumer - educate customers

Commercial Collection Containers



Color Coded Containers



Staff Training

- Employee orientation
- Ongoing
 - Staff meetings
 - Signage
 - Recognition
- Consistent
- Seek Feedback/Provide Feedback
 - Give periodic updates
 - Amount of food scraps diverted...



Turning Food Waste into Soil

CVSWMD Commercial Composting Project

Compost Guidelines

1. Keep compost and trash separated.
This is critical.
2. Put all items for composting in the container marked Compost.
3. Keep the compost container lid closed when not in use.
4. On compost collection day, make sure that all compost totes that are more than half full are at the designated pickup area.

YES COMPOST THESE!

Meat, bones, fish and seafood
Seafood shells
Fruits and vegetables
Eggs, eggshells, egg cartons
Milk, cheese, other dairy
Dressings, condiments, sauces
Soups
Flour, bread, all pasta and pastries
Coffee grounds and filters
Nuts, nut shells
Spices
Oils, fats

NO PUT THESE INTO THE TRASH!

Paper products, including:

- paper towels and napkins
- sugar and flour bags
- waxed milk and juice containers
- soiled cardboard
- sugar and sweetener packets

Plastics, including:

- utensils
- straws
- sticks
- bags
- twist ties
- plastic wrap
- packaging
- PLU stickers

Floral products, including:

- plants
- cut flowers

Cloth, including:

- handi-wipes
- cloth rags

Rubber bands



What's a PLU sticker?

PLU stickers are the labels often found on fresh fruits and vegetables that identify the cost at the check-out counter. These stickers are plastic, so please keep them out of the compost bin!

Please see your manager or call the CVSWMD if you have any questions—229-9383. Thanks!



CENTRAL VERMONT SOLID WASTE MANAGEMENT DISTRICT
137 Barns Street Montpelier, Vermont 05602
802-229-9383 www.cvswmd.com



COMPOST



all food



paper wrappers



**All cups
Coke lids &
straws**

**FOOD-SOILED
PAPER &
CARDBOARD**
if clean & dry, please recycle



**plates &
napkins**
*please recycle
utensils*



**coffee & tea
items**
*please recycle
coffee lids*

**PAPER
TOWELS**



pizza boxes

**Thank you for helping
SCU reduce waste!**

**Questions?
E-mail: recycling@scu.edu**



COMPOST

FOOD, SOILED PAPER PRODUCTS,
PLASTICS CLEARLY MARKED AS COMPOSTABLE



Bioplastics with the
Biocompostable symbol: PLA



Food, napkins, coffee and filters, greasy pizza boxes, milk cartons, most food containers from the cafeteria, paper coffee cups



What's Compostable?

→ Any biodegradable item such as food and organic materials (excluding plastic and metal):

- Fruits and Vegetables (apple core, orange peels, banana peels, salad with dressing)
- Meat or fish (including bones and egg shells)
- Meat alternatives (nuts, tofu, legumes)
- Dairy products (cheese, yogurt)
- Grain and cereal products (including bread, cakes, breakfast cereals with milk)
- Paper towels and napkins
- Soiled paper (paper food wrapping, paper plates, wet newspaper) and cardboard (pizza boxes)



WE COMPOST!

BUSINESSES DIG IT

¡Produce el abono!

¡Nuestras Empresas
Ahora Participan!

**TODO LA
COMIDA**

Frutas, verduras, carne, pescado,
mariscos, huesos, arroz, frijoles,
fideos, pasteles y panes, queso, y
cáscara de huevo

ALL FOOD

Fruits, vegetables, meat,
poultry, seafood, shellfish,
bones, rice, beans, pasta,
bakery items, cheese and
eggshells

**FOOD-SOILED
PAPER**

Waxed cardboard,
napkins, paper towels,
uncoated* paper plates,
tea bags, coffee grounds/
filters, wooden crates and
greasy pizza boxes

**Uncoated food-soiled
paper does not have a
shiny surface.*

**PAPEL MANCHADO
POR COMIDA**

Cartón encerado, servilletas,
toallas de papel, platos
de papel*, bolsillos de té,
posos/filtros para el café,
cajas de madera y cajas
grasientas de la pizza.

**Papel manchado por
comida sin recubrimiento no
tiene una superficie brillante.*

PLANTS

Floral trimmings, tree trimmings,
leaves, grass, brush and weeds

PLANTAS

Recortes de plantas, podos de árbol,
hojas, pasto, maleza y mala hierba

NO!

- Liquids, grease, cooking oil
- Plastic or styrofoam
- Glass
- Metal

**When in doubt,
throw it out!**

Our Collection Schedule is:



¡NO!

- Líquidos, grasa, aceite de cocinar
- Plástico o Styrofoam
- Vidrio
- Metales



Recycle at Work
from Metro and Clackamas County
503-557-6363

Catchy
Bilingual
All-in-one

Recognition



eco-cycle

**ZERO WASTE
COMMUNITY PARTNER**

www.ecocycle.org

 **WE RECYCLE**

 **WE COMPOST**



Residential Food Scrap Collection

Kitchen Collection Containers



FOOD & PAPER COMPOSTING

In the designated dumpster

Yes - DO Compost:

- All food wastes
- Meat, fish bones, dairy, eggs, eggshells
- Fruit, vegetables
- Cooked rice, pasta
- Tea bags, coffee grounds & paper filters
- Non-recyclable paper and cardboard
- Soiled or waxed cardboard
- Soiled pizza boxes
- Soiled or waxed paper
- Paper egg cartons
- Paper towels, napkins
- Paper plates, cups, and plastic lids or straws
- Small wooden fruit crates

No - DO NOT Compost:

- Plastic bags, wrappers, plastic wrap
- Liquids
- Tissues
- Plastic utensils
- Styrofoam or plastic foam or chips
- Pet wastes or bedding
- Trash
- Plastic, metal glass

Household waste is offered as a municipal service and subject to a technical assessment and financial assessment and is subject to payment of a service fee and other charges.

Household waste is not accepted at the following locations: ...

amend ORGANICS Sort your Compostables to Compost

yes:

paper cups, paper plates, compostable cutlery, paper tissues & towels, paper take out & pizza boxes, paper egg cartons

tea bags, coffee grounds & filters

meat, seafood, bones & fat

all dairy & egg shells

pizza, pasta, baked goods

all plants, flowers and all fruit & veggie scraps

nope:

styrofoam & plastic cups, plastic plates, plastic cutlery, straws, plastic wrappers, plastic egg cartons...

recyclable paper & recyclable food boxes, milk cartons, juice boxes

plastic bags & packaging

silverware, glass, metal

If in doubt about any items, ask us! info@amendorganics.com

Transfer Station Food Scrap Drop-off



Bear-Resistant Containers

Who's Doing it?

Franklin County Solid Waste District, Massachusetts

- 4 municipal drop-offs
 - Food scraps & soiled paper
- Technical assistance
 - Businesses, schools & special events



Who's Doing it?

Chittenden Solid Waste District, Vermont

- Food scraps at its seven drop-offs
- No charge
- Free 4-gallon bucket with a lid



Green Mountain Compost™
Local. Sustainable. Wicked Good.
Formerly Intervale Compost Products

[Home](#)

[Products](#)

[All About Compost](#)

[How to Compost Anywhere](#)

[About Us](#)

[Contact](#)

Residential Curbside



Colored Carts



Use Your Kitchen Collector to Recycle Food Scraps



WHAT YOU CAN RECYCLE

Food Scraps

- Fruit & vegetable peelings
- Floral trimmings
- Table scraps
- Meat, poultry, fish scraps & bones
- Cheese & dairy scraps
- Eggshells
- Coffee grounds, filters & tea bags
- Bread, grains & pasta
- Paper bags containing food scraps
- Used paper towels and napkins

NOT FOR FOOD RECYCLING

- Bathroom Tissues
- Diapers
- Foil
- Garbage
- Glass
- Grease
- Hazardous waste
- Liquids
- Metal
- Pet waste & litter
- Plastic containers
- Soil
- Styrofoam

EMPTY IN YARD WASTE CART



Place food scraps in your yard waste cart for pickup on your regularly scheduled yard waste collection day.



NO PLASTIC BAGS OF ANY TYPE ARE ACCEPTED!



Questions? Contact VWM at (925) 935-8900



Words Pictures Addresses – Compostable Plastics

COMPOST

All Food, Coffee Filters and Grounds, Tea Bags, All Paper To-Go Boxes & Containers, Napkins, Towels, Cups, Plates, All Plant Material, Waxed Cardboard, Clean Untreated Wood & Sawdust, Compostable labeled plastic ware - Utensils, Cups, To-Go Boxes & Containers

Check Plastic Items for this number & BPI Logo or "Compostable"



COMPOSTABLE
BPI | US COMPOST™



Questions?
emeryville.wm.com
510.613.8710

Simple, but Clear



Multilingual
Real pictures
All-in-One

Composting Collection

All Food
fruits, vegetables, meat, poultry, seafood, shellfish, bones, rice, beans, pasta, bread, cheese and eggshells.

Other Compostables
waxed cardboard, napkins, paper towels, paper plates, paper milk cartons, tea bags, coffee grounds/filters, wooden crates, sawdust.

Plants
floral trimmings, tree trimmings, leaves, grass, brush, weeds.



Only BPI labeled compostable bags accepted

No!
plastic bags/wraps/straws
styrofoam
bottles and cans
aluminum foil
liquids
hazardous waste

不收!
塑膠袋 / 保鮮膜紙 / 軟筒
泡沫膠
樽和罐
液體
有害物品

¡No!
bolsas/envolturas/paños de plástico
espuma de poliestireno
botellas y latas
papel de aluminio
líquidos
desechos peligrosos



全部食物
水果、蔬菜、肉類、家禽、海鮮、骨頭、米飯、豆類、麵粉類、麵包和乳酪、有殼海產、蛋殼

被食品弄髒的紙類
用過的紙餐盒、餐巾、紙巾、紙碟、咖啡過濾紙、茶袋、木屑和鋸木屑、牛奶紙盒

植物
花卉剪枝、樹枝、樹葉、草、雜糧和野草

Toda Comida
frutas, verduras, carnes, mariscos, crustáceos, huesos, arroz, frijoles, pastas, pan, quesos, cáscaras de huevo.

Papel Manchado por Comida
cartón encerado, servilletas, platos y toallas de papel, filtros y posos de café, recipientes de cartón para leche, bolsas de té, cajas de madera, aserrín.

Plantas
recortes de flores y árboles, hojas, césped cortado, malezas, hierbas.

YOUR COLLECTION DAY IS:
你的收集日期是：

EL DÍA DE RECOLECCIÓN ES

Containers must be on the curb, at a loading dock or otherwise accessible on collection day.
收集桶必須放在路旁、卸裝卸載處、或放在可以方便收集的位置。
Los recipientes deben colocarse en el bordillo o en una zona de carga o en un lugar accesible.



Printed on 30% postconsumer recycled paper

Questions?
Sunset Scavenger Company
415-330-1300
www.sunsetscavenger.com

Golden Gate Disposal & Recycling Company
415-626-4000
www.goldengatedisposal.com

ACCEPTABLE COMPOST ITEMS



WWW.A2GOV.ORG/COMPOST

the greenwaste guide to **COMPOSTABLES**

El guía de greenwaste para **COMPOSTABLES**



thanks for making greenwaste

a greener place to work!

Multi-Family

Your building now has a green cart for food scraps and soiled paper



Your cart is located:

Who's Doing it?

Windham Solid Waste Management District

- Brattleboro curbside
- Vernon food scrap drop-off
- Windham County residents or businesses can compost food scraps at the District's "COW"



Who's Doing it?

Hamilton & Wenham, Massachusetts

- Citizen-led initiative
- Collected with a split body truck on a weekly basis
- Hamilton trash collection is every other week

Huron, Ohio

- Year-round collection of food scraps
- Yard waste collection for nine months/year
- Residents charged \$220/year for waste, recycling, & compost



Garbage to Garden



FINALLY, WEEKLY CURBSIDE COMPOST PICKUP.

Stop contributing to landfills and start composting, with Garbage to Garden, where your kitchen scraps are recycled -- your participation helps us to support schools, gardens, and the environment.

[SIGNUP ONLINE NOW!](#)

GARBAGE TO GARDEN HELPS YOU TO:

- Recycle your food scraps on garbage day
- Compost all food waste, including meat, dairy, and bones
- Receive a clean bucket each week
- Request deliveries of matured compost at no extra charge
- \$11 monthly, and FREE if you can volunteer!

DID YOU KNOW THAT FOOD WASTE IS THE #1 COMPONENT OF MUNICIPAL GARBAGE?

When you compost with Garbage to Garden, you are helping to keep organic waste -- the primary component of trash -- out of landfills and incinerators. You are also reducing atmospheric pollution and greenhouse gas emissions.

The waste you recycle with Garbage to Garden is used to renew our soils, and to generate green electricity through anaerobic digestion technology, with no harmful byproducts.

It's Yucky...

It Smells...

It will attract mice, bears...



Overcoming “Yuck Factor”

- Simple, concisely worded fliers
 - Distributed to residents at least at the start of the collection program
- Signage at the point of collection
- Website & social media

Tips to Provide Residents

- Use container with a tight fitting lid
- Line with paper or approved compostable bag
 - Newspaper/paper towels
- Wash the collection bucket
 - After each “dumping”
 - Rub vinegar around the rim
 - Sprinkle with baking soda



Tips to Provide Residents, cont.

- Put “smelly” scraps directly into the outside collection cart
- Dump food scraps into curbside cart or outside bin every few days
 - Cover food scraps with yard trimmings, shredded paper, newspaper, a little soil



We Take Organic Waste

The most important thing to know about organic waste is that **we take it**. And, unlike other farm digestion systems in northern New England, EAE is fully permitted to accept all forms of digestible organic materials. This includes liquids, solids, and a range of slurry products including grease trap waste, a key competitive advantage. Additionally, we have designed several back-up features into the system, so you never have to worry about reliability. This super efficient process wastes nothing at all and keeps the environment clean.

What's more, our superior operations team can help you with a variety of reliable and cost-effective transportation solutions, using our internal trucking fleet and close relationship with third party haulers. We can even deploy qualified resources to design an efficient handling protocol at your waste generation site. EAE is now actively seeking business relationships with large food companies, seafood processors, restaurants, educational institutions, hospitals, solid waste trucking companies, etc.

To discuss partnership opportunities and the affordable disposal of your organic waste, contact **Adam Wintle** at adam@biogasenergypartners.com.

We Can Help You!



The important thing to know about organic waste is that we accept it. Contact us to discuss partnership opportunities and the affordable disposal of your organic waste.

LET'S TALK!



St. Georges, Maine

NERC Can Help

We're experts in

- Waste reduction & recycling
- Recycling program design & implementation
- Organics management
- Green procurement
- C&D reuse & recycling
- Electronics recycling
- School reuse, recycling & composting
- Textile recycling programs
- Multi-stakeholder dialogues & negotiations
- & More!

Fee for service program
makes NERC's
sustainable materials
management

expertise available at a
reasonable price with
outstanding results

Athena Lee Bradley

athena@nerc.org

802.254.3636

www.nerc.org