



NORTH EAST GLASS FORUM

SEPTEMBER 1 & 2, 2020

JOE SARDONE, GENERAL MANAGER

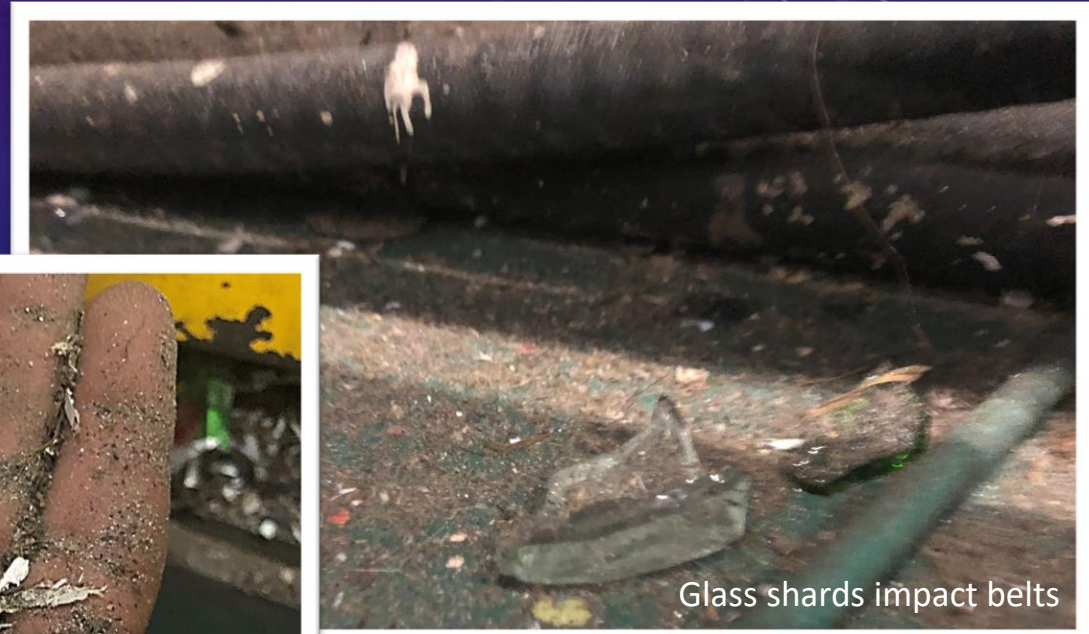
INBOUND GLASS

- INBOUND GLASS PERCENTAGES AVERAGE BETWEEN 19%-25%
- INBOUND PERCENTAGES HIGHLY EFFECT TONNAGES OF LOADS
- INBOUND GLASS IS MOSTLY BROKEN BEFORE IT IS INTRODUCED INTO THE SYSTEM
- 1/3 of 10 million metric tons of glass is recycled yearly in the US
- Inbound glass is rarely cleaned out



COSTS

- Glass in MRF facilities accelerates failure of belts
- Glass is a major contamination of finished products in MRF facilities
- Glass cleaning systems cost millions with no clear defined ROI
- Above average cost to maintain cleaning systems
- Added weight increases fees to municipalities on tonnage costs
- Worker injuries from handling glass



Glass shards impact belts



Glass dust causes wear and tear on equipment

FUTURE

- Source separation removing glass from the single stream to recycle
- Glass end users need to help shoulder the process
- Source separation lowers tonnage cost for municipalities in both the recycling and MSW stream
- Source separation increases the overall value of the blended recycled commodities giving added value to both processor and municipalities
- Source separation increases life span of all equipment

